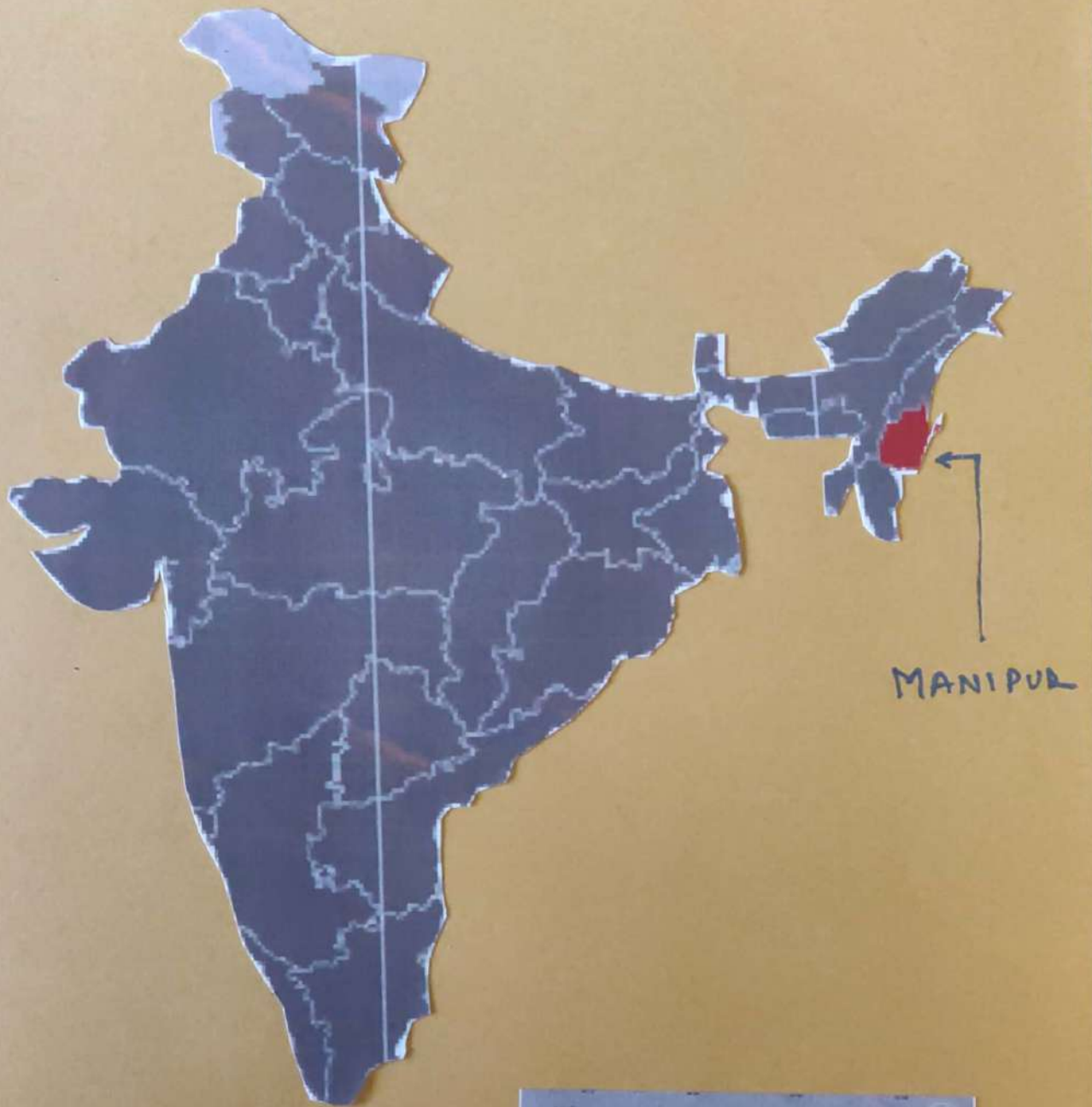
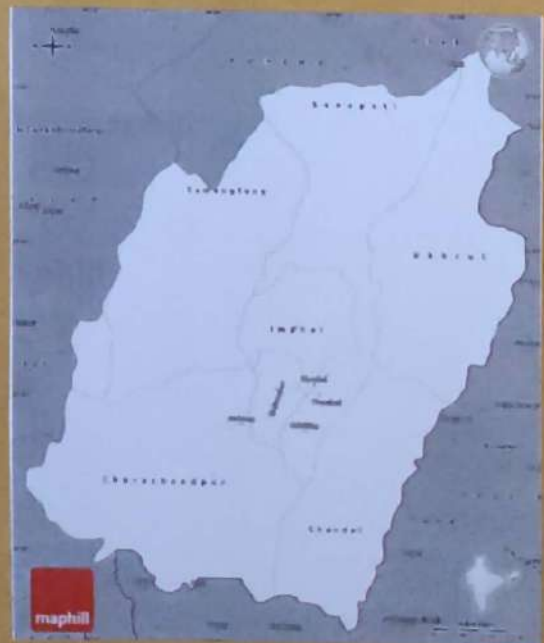


MANIPUR ~
THE JEWEL OF INDIA

AMARYA MURARKA { III } EVS OPEN BOOK PROJECT



- AREA - 22,327 km²
- POPULATION - 2,855,794
- FORMED - 21 JANUARY 1972



MANIPUR

MANIPUR - known as "LAND OF GEMS"

CAPITAL - Imphal

LANGUAGE - Meiteilon, also known as Manipuri.

LOCATION - Situated in the eastern most corner of North east India. The state shares borders with Nagaland, Mizoram, Assam and Myanmar.

RELIGION - Hinduism and Christianity

EMBLEM - Kangla sha

CLIMATE - The climate of Manipur is moderate in the valley and cold in the hills. The average high temperature is 32° - 34° C, while in the winter temperature falls to 1° - 2° C. Rainfall is abundant. November to February are dry months.

MAMMAL - Sangai - The dancing deer

BIRD - Nongyeen

FLOWER - Shikwi Lily

TREE - Uningthou

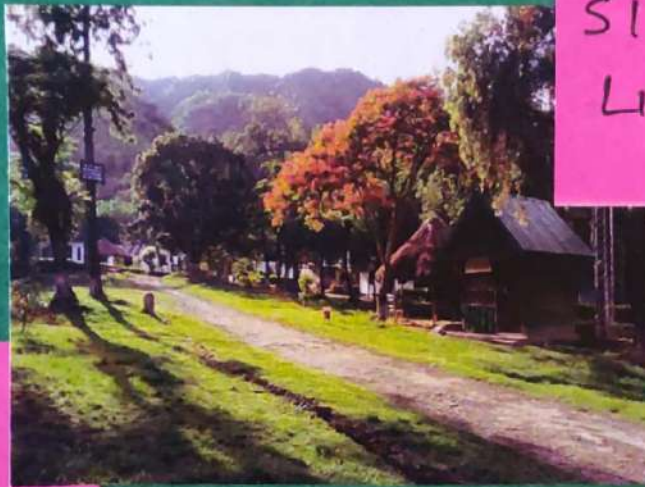
STATE ANIMAL

SANGAI



STATE FLOWER

SIROI LILY



STATE BIRD

MR'S HUMES

PHEASANT



STATE TREE

UNINGHTOU



MANIPUR ... AT A GLANCE ...

III UNIQUE "FLORA" OF MANIPUR :

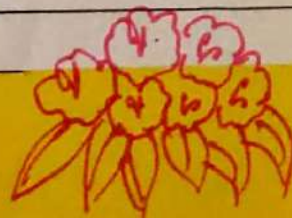
ORCHIDS - Manipur houses 500 varieties of Orchids out of which only 472 varieties have been identified. Manipuri word for orchid is **UREI**, which means flower that grows on wood. Orchids are perennial herbs and feature unusual bilaterally symmetric flowers, with masses of pollen known as pollinia, and tiny, dustlike seeds. **KHONGAMELEI** and **KWAKLEI** are the most common orchids in Manipur.



SIROI LILY - Shirui lily is surely the most beautiful of all lilies. As many as eleven of its white bell-shaped flowers, flushed pink at the base, may appear on a single stem. Shirui lily is the state flower species of **MANIPUR**. The plant is about a foot tall. The leaves are longish and narrow like most lilies.



RHODODENDRONS - species of woody flowering plants, notable for their attractive flowers and handsome foliage. Rhododendrons meaning "**RED TREE**" refers to the red flowers and woody growth of some species, but Rhododendrons range in habit from evergreen to deciduous and from low-growing ground covers to tall trees.





ORCHIDS (UREI - MANIPURI)



RHODO DENDRONS



SIROY LILY
STATE FLOWER
OF MANIPUR!!

FLORA

III UNIQUE "FAUNA" OF MANIPUR :

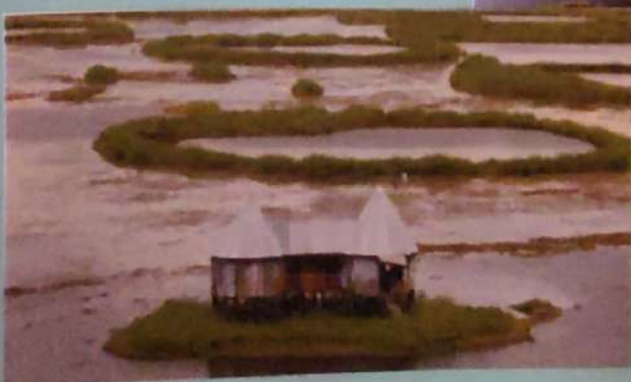
SLOW LORIS - Lorises are arboreal and nocturnal, curling up to sleep by day. They have soft gray or brown fur and can be recognized by their huge eyes encircled by dark patches and by their short index fingers. They move with great deliberation through the trees and often hang by their feet, with their hands free to grasp food or branches.



CLOUDED LEOPARD - Clouded leopard, also called clouded tiger, strikingly marked cat, very similar in colouring and coat pattern to the smaller, unrelated marbled cat. They are reported to be nocturnal and to live in trees.



HIMALAYAN BLACK BEAR - ASIATIC BLACK BEAR, (*Ursus thibetanus*), also called HIMALAYAN BEAR, TIBETAN BEAR OR MOON BEAR, member of the bear family (*Ursidae*) found in the Himalayas, Southeast Asia, and parts of eastern Asia. The Asiatic black bear is omnivorous, eating insects, fruits, nuts, beehives, small mammals, and birds, as well as carrion. It will occasionally attack domestic animals. It has a glossy black coat, with a whitish mark shaped like a crescent moon on the chest.



KEIBUL LAMJAO
NATIONAL PARK !!

'KEIBUL LAMJAO NATIONAL PARK'

LOCATION : Bishnupur district, Manipur.

ESTABLISHED : Year 1977, 28th March.

COVERAGE AREA : 40 square kilometer.

MAIN ATTRACTION : Sangai Deer

The Keibul Lamjao National Park is the most prominent tourist destination to experience the wildlife of Manipur. This national park is the only floating park in the entire world. The famous "**Sangai Deer**" (dancing deer), a wide range of Otter and Hog deer. The national park is characterized by floating decomposed plant material locally called **PHUMDI**. Aquatic flora like wild rice, elephant grass, buck wheat, water chestnut are found here. The blue crested lizard, Asian rock python, keel back tortoise, the bamboo rat, flying fox, musk shrew, viper and various avifauna like hill myna, yellow headed wag tail, blue winged teal etc. are few of the exotic animals living here.



THE ONLY 'FLOATING PARK' IN THE WORLD!!!

'SANGAI' - THE DANCING DEER



THIS BROW-ANTLERED DEER IS THE STATE ANIMAL
OF MANIPUR - AND IS FOUND IN KAIBUL LIANGAO
NATIONAL PARK !!