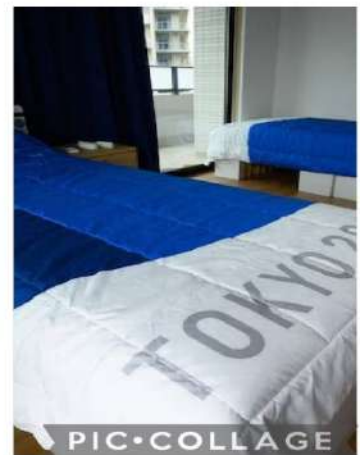


EVS

Open Book Project

**A Sustainable Mindset at the Olympics –
Why let the waste go to waste?**



By: Darsh Agarwal

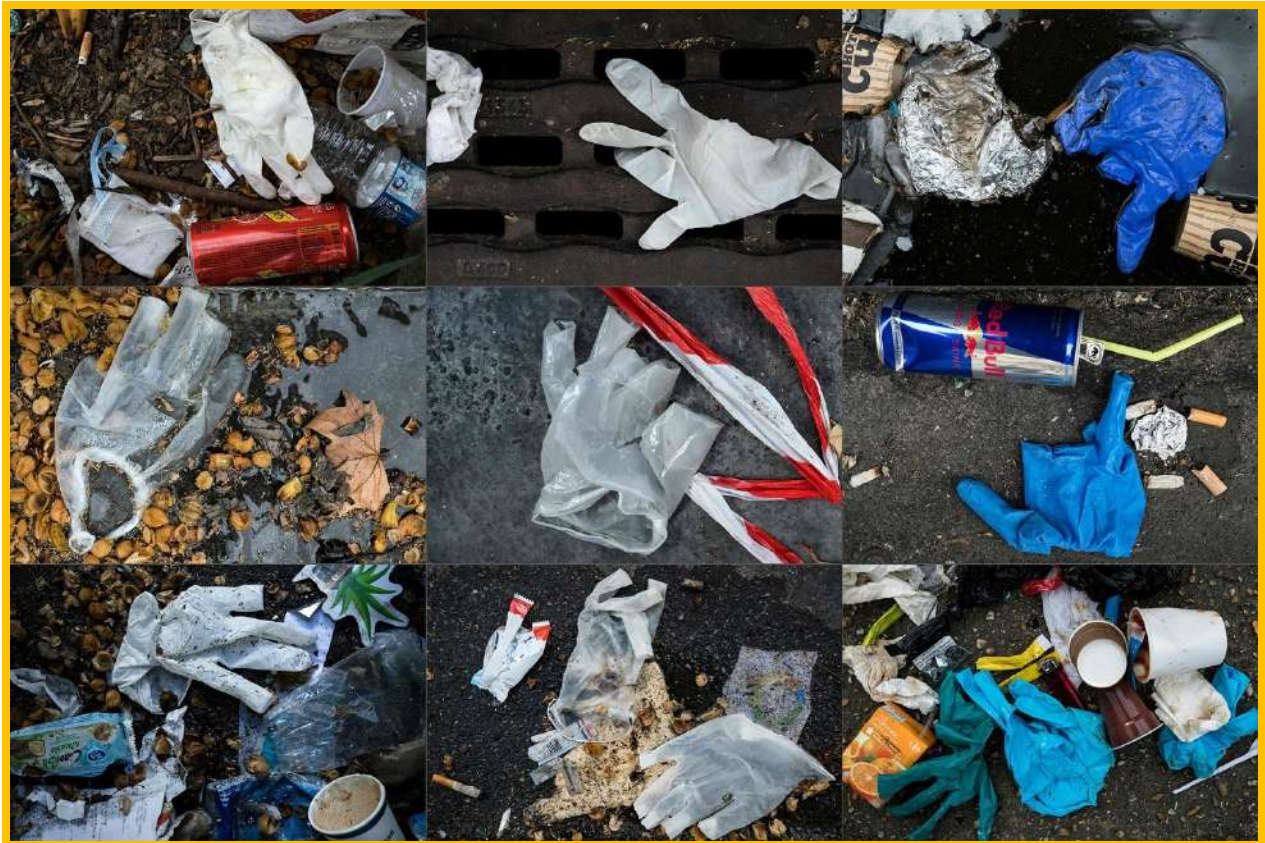
Class – 5 Daisies

The Proper disposal of Wastes in this Current Pandemic

In response to Covid19, hospitals, healthcare and individuals have been producing many types of additional medical and hazardous waste, including masks, gloves, gowns and other protective equipment that could be infected with the virus. There is also a large increase in the amount of single use plastics.



The quantity of waste has increased as well due to social distancing measure of staying at home. Mismanagement of this waste could cause adverse effects on human health and the environment. The safe handling, and final disposal of this waste is a vital element in an effective emergency response and is important for the following two reasons:



1. If the waste is not handled properly, it can escalate the spread of Covid 19 via secondary transmission. Like, by throwing waste like masks on the road, we are creating more risk for the people who pick them up. Therefore, we should use reusable mask rather than one time mask.

HOW TO DISPOSE YOUR MASK CORRECTLY (IF YOU ARE SICK)



WASH YOUR
HANDS.



TAKE OFF
YOUR MASK.



FOLD YOUR USED
MASK INTO HALF
(SO YOUR GERMS/DROPLETS
ARE CONTAINED INSIDE)



...THEN ANOTHER
HALF...



...AND HALF...
UNTIL IT IS
LIKE A ROLL.



YOU CAN EVEN WRAP
IT WITH THE EAR
LOOPS.



WRAP IT WITH A
TISSUE PAPER
BEFORE YOU THROW...



...SO THE GERMS WILL NOT
BE EXPOSED TO THE AIR
AND INFECT OTHERS.

2. Uncontrolled dumping or open burning of infected medical waste can lead to release of toxins which is harmful for the environment.



3 ways of proper disposal of Wastes in our Locality

As a responsible citizen, I would contribute towards the proper disposal of solid wastes in my locality in the following ways.



1) Adopting Composting:

Composting can reduce household waste generation by 30 percent. We should put wet wastes like leftover foods, vegetables, peels etc. in an organic dustbin, which can later be used for composting. Composting is also beneficial for plant growth as it provides many essential nutrients, and it can also be used as fertilizer. The humus or soil generated by compost can also be used to treat a greenhouse.



2) Adopt 3 R's: Repurpose, Reuse, Reduce

Re-purposing household trash is a good way to reduce waste. For example, instead of throwing the plastic bottles we can use them to decorate our house and make other DIY plastic showpieces. We can use old wood and pallets to build compost bins. Reuse toiletries like shampoo bottles as well as charging stations, old toothbrushes as cleaning tools.



3) Segregate Waste:

In order to segregate waste, we can simple start by getting coloured bins. We can differentiate the bins into the following: Green for organic, yellow for glass, white for paper, grey for metal, red for hazard and blue for plastic. Segregation helps to identify waste which can be recycled and composted and therefore, can reduce the garbage burden on the already overflowing landfills, thereby curbing the pollution levels.



Solid Waste Management Model



Darsh Agarwal,
5D



Link to view the video of the model made by Darsh:

<https://youtu.be/QEJ1Vi73YoE>

Wastes used to create the model are:

- Printer Ink Containers – Composting Units
- Empty Match Boxes – Shops / Trucks
- Scotch-brite Scrub pads – Grass/ Farms
- Empty Paint Containers – Garbage collection
- Empty Plastic Bottle and Round Cardboard – House
- Face Cream Cardboard Box – Waste Sorter
- Batteries – Truck Wheels
- Cardboards – Recycling Plant, Manufacturing Plant
- Lego Characters – People

THANK YOU